

## "Using Parsec" - IDN Recording Tutorials by Tim Walsh

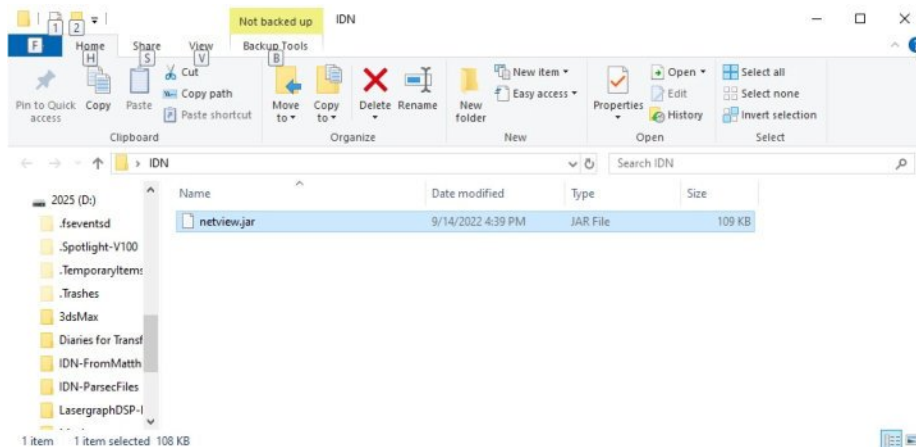
### IDN TUTORIAL #1 - Installing Java and Running Netview and/or Parsec

This tutorial focuses on getting the DexLogic program "Parsec-13" running on your PC.

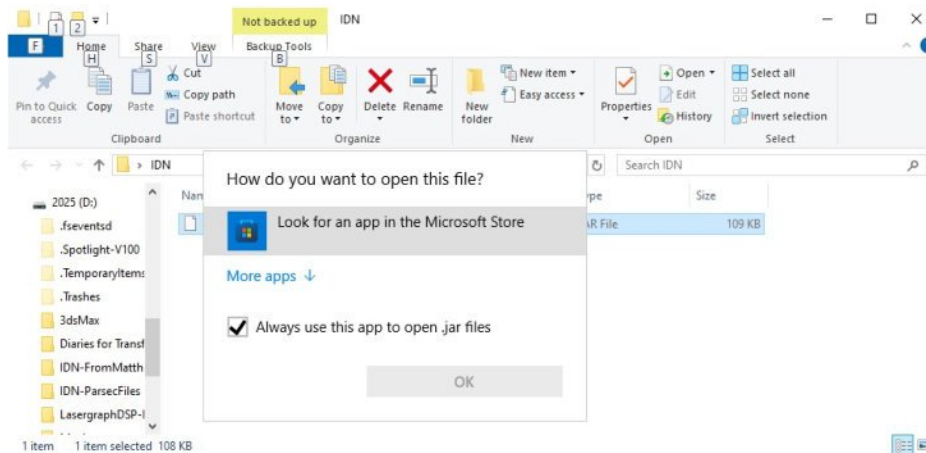
There is also a small program from DexLogic called "Netview". Netview shows you what DexLogic IDN devices are connected to your network, and gives you access to them. If you are using a different brand of IDN device you can skip and just try running Parsec

However, Netview and Parsec run on Java, and many PCs will not have Java installed.

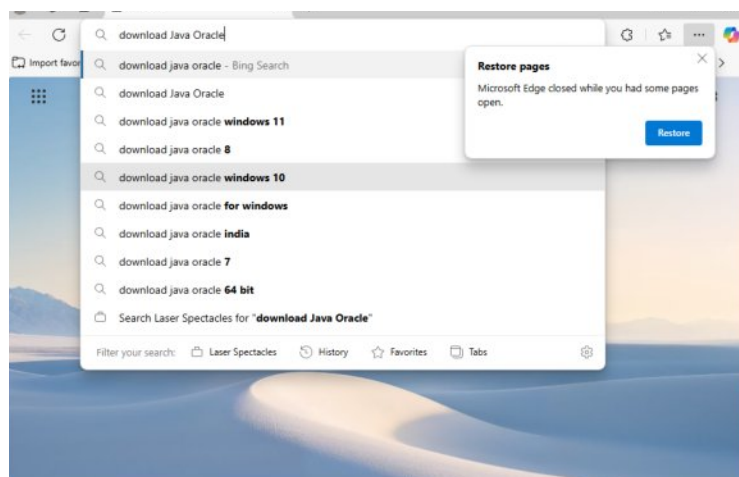
**First we will check if the PC can run Netview or Parsec.** I have placed the program Netview inside the IDN folder on my desktop, you can put it anywhere you like, the program is self-contained and stands alone.



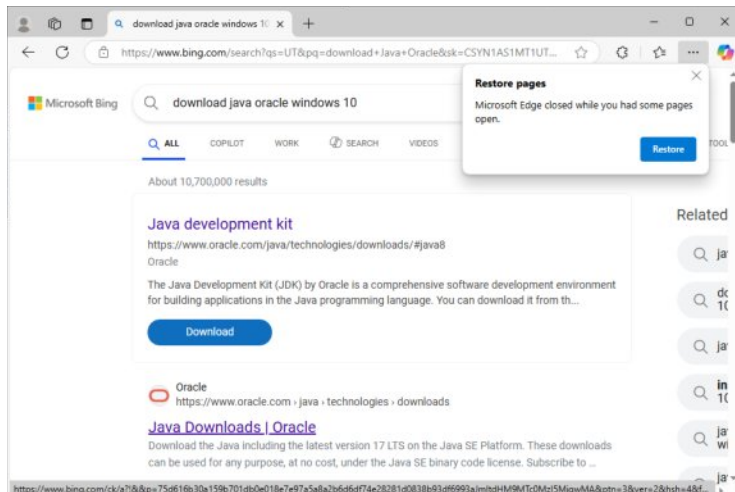
Double-click on the Netview or the Parsec name. If they do not run, you need to download and install Java!



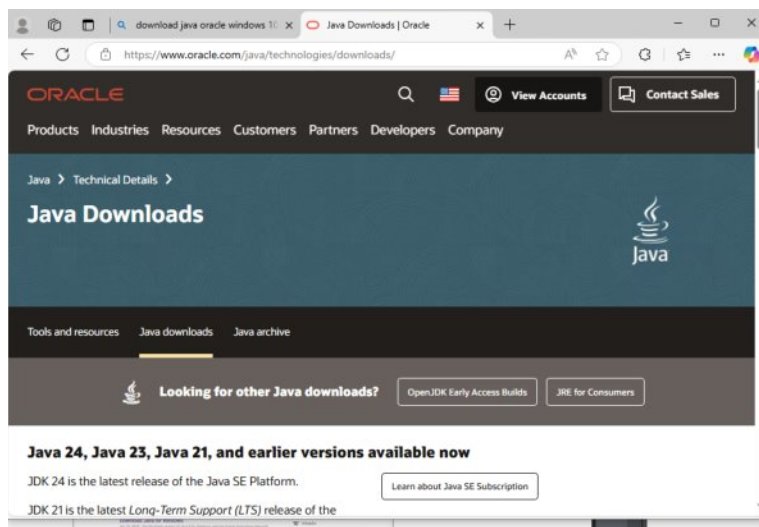
**Installing Java** - Go online, and search for "download java oracle windows 10".



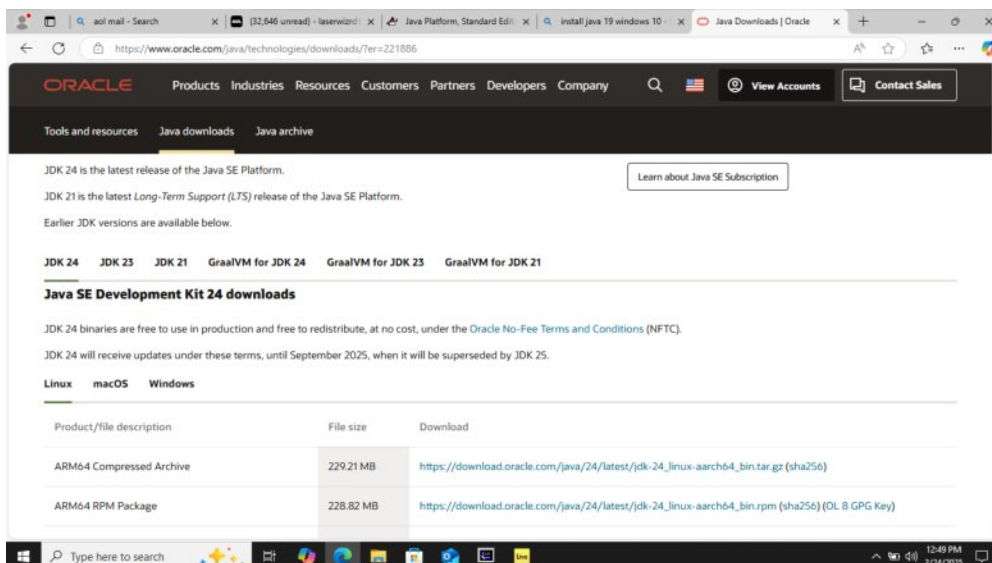
Click "Java Downloads Oracle" (second item in my search results) to get to the download page.



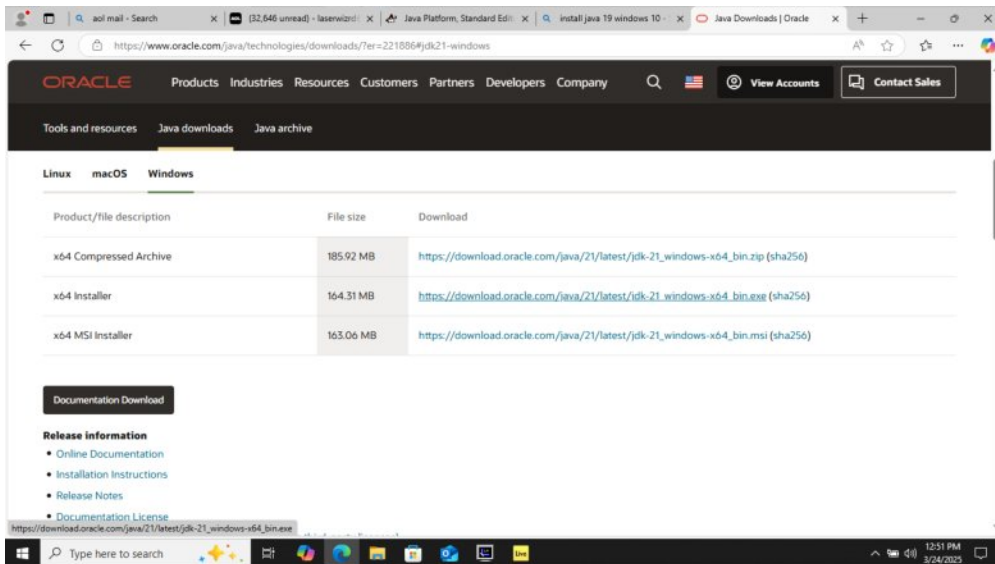
The Java downloads page we want:



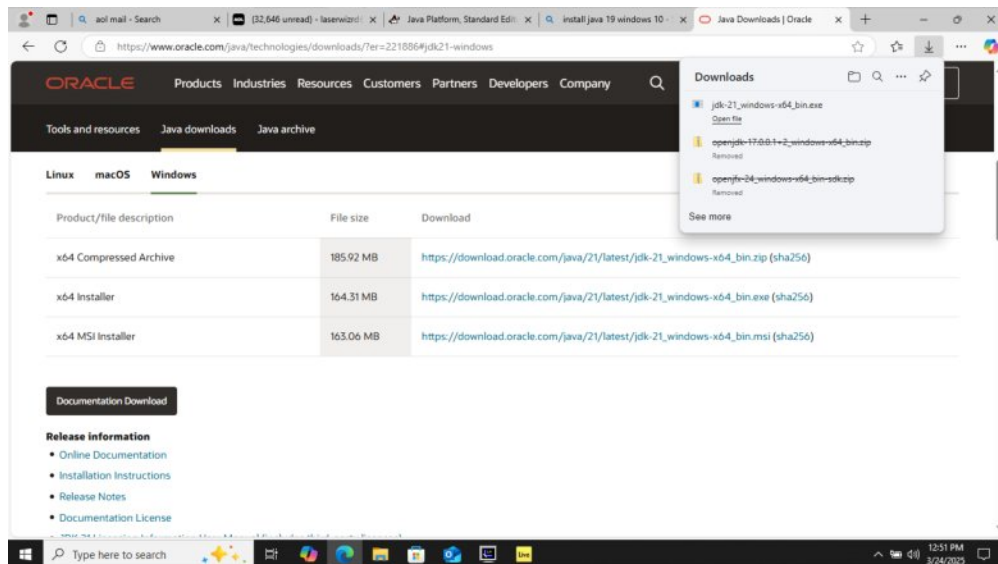
Oracle is offering Java 24 as the latest version, but I am going to get Java 21 as recommended by DexLogic, because of the LTS support that will keep it an industry standard for years. I'm clicking on "Windows" because that is the laptop I'm using:



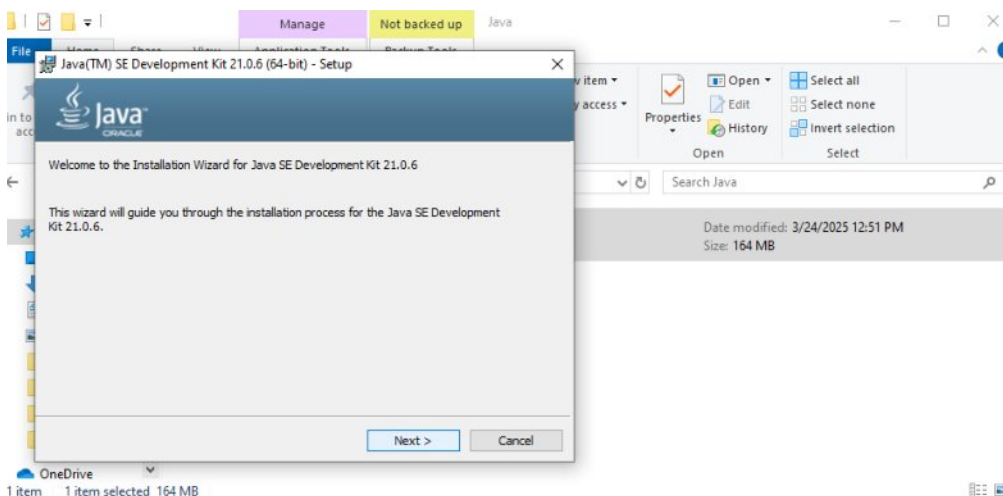
Next I click the offered file for the Java 21 x64 installer, and the file will download, it is a “.exe” file that will install Java on your machine:



Click “open file” to run, or find the file in yhour downloads folder and double click to run:

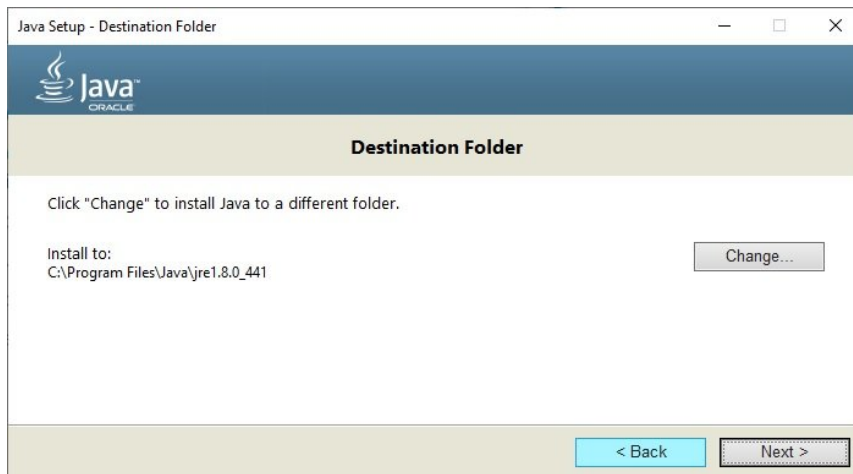


Follow the wizard's instructions to install Java:



Allow "Java" to make changes to your device.

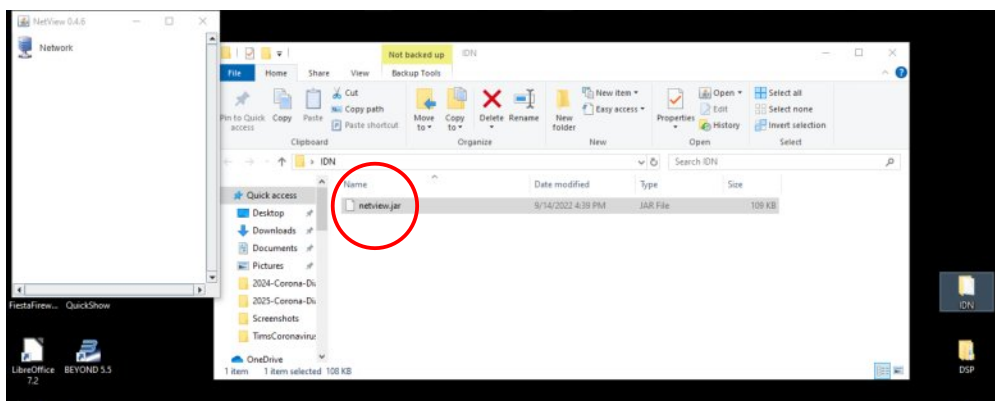
In the next window I recommend to leave the default folder selection and click "Next".



Wait, and Java will be installed. Click "Close" when the installer is finished.



Now try running "netview" with a double click. When it opens, you will see a small window in the upper left of your screen, Congratulations! If you are using an IDN device other than DexLogic, please move below to the section on starting Parsec, and be sure that it runs.



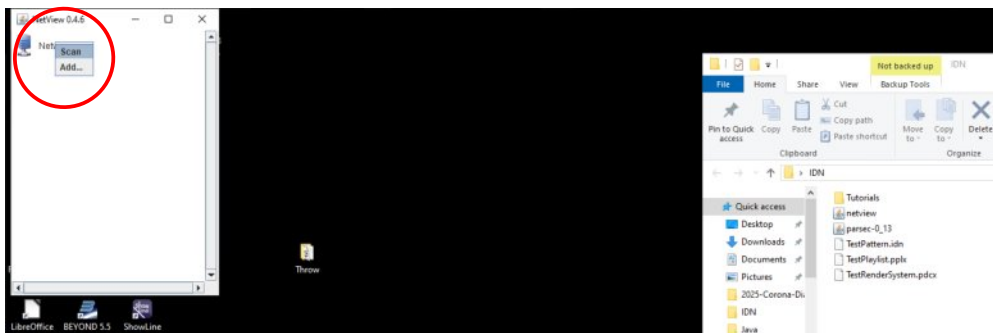
IMPORTANT: Inside your network router, be sure that the DHCP server is configured to dynamically allocate IP addresses within the range that your network normally uses, and will assign an IP address to all of the IDN devices that you are using. Alternatively, you can set a static IP address for each device. The preceding is beyond the scope of this tutorial; from here on, I will assume that you are dynamically assigning IP addresses within the router.

At this point, you should connect your ethernet cable and be sure that your DexLogic IDN device(s) is connected to the same network.

Next, go to the netview window and right-click on the word (it's the only one!) "Network".



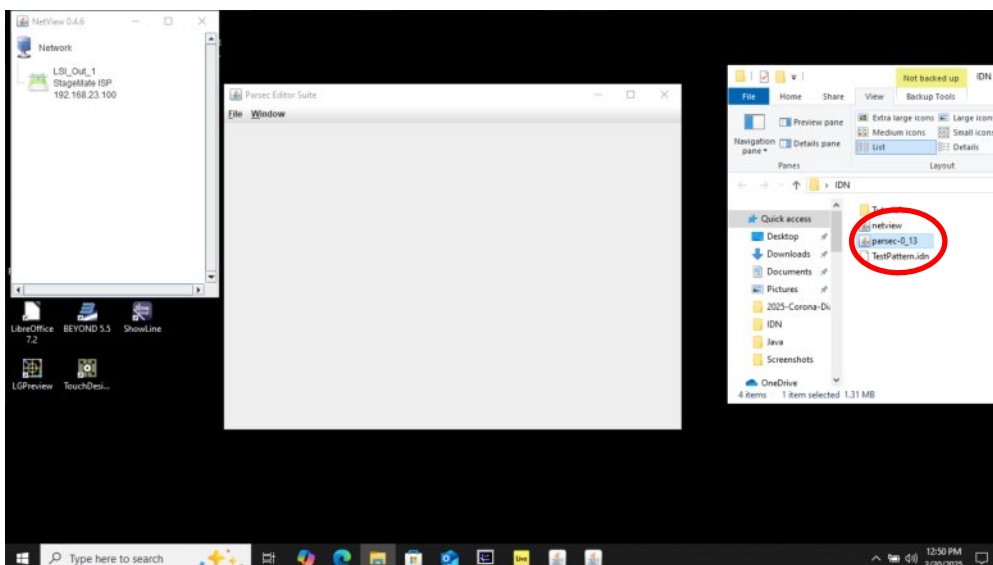
Left-click "Scan" in the drop down menu that appears. After a few seconds, a list of your connected DexLogic IDN devices will appear, with device name, type of device, and the network IP address that has been assigned.



It is possible to set a permanent IP address for each device, but not necessary.

If your device is not found, check that it is powered up and connected to the network. Turn it off and back on again if needed.

**Test that the program "Parsec-13" will run** on your new Java, double click on the program and the opened window should look like this (you can leave netview open):



At this point you have successfully installed Java 21, and are ready to use it for IDN.